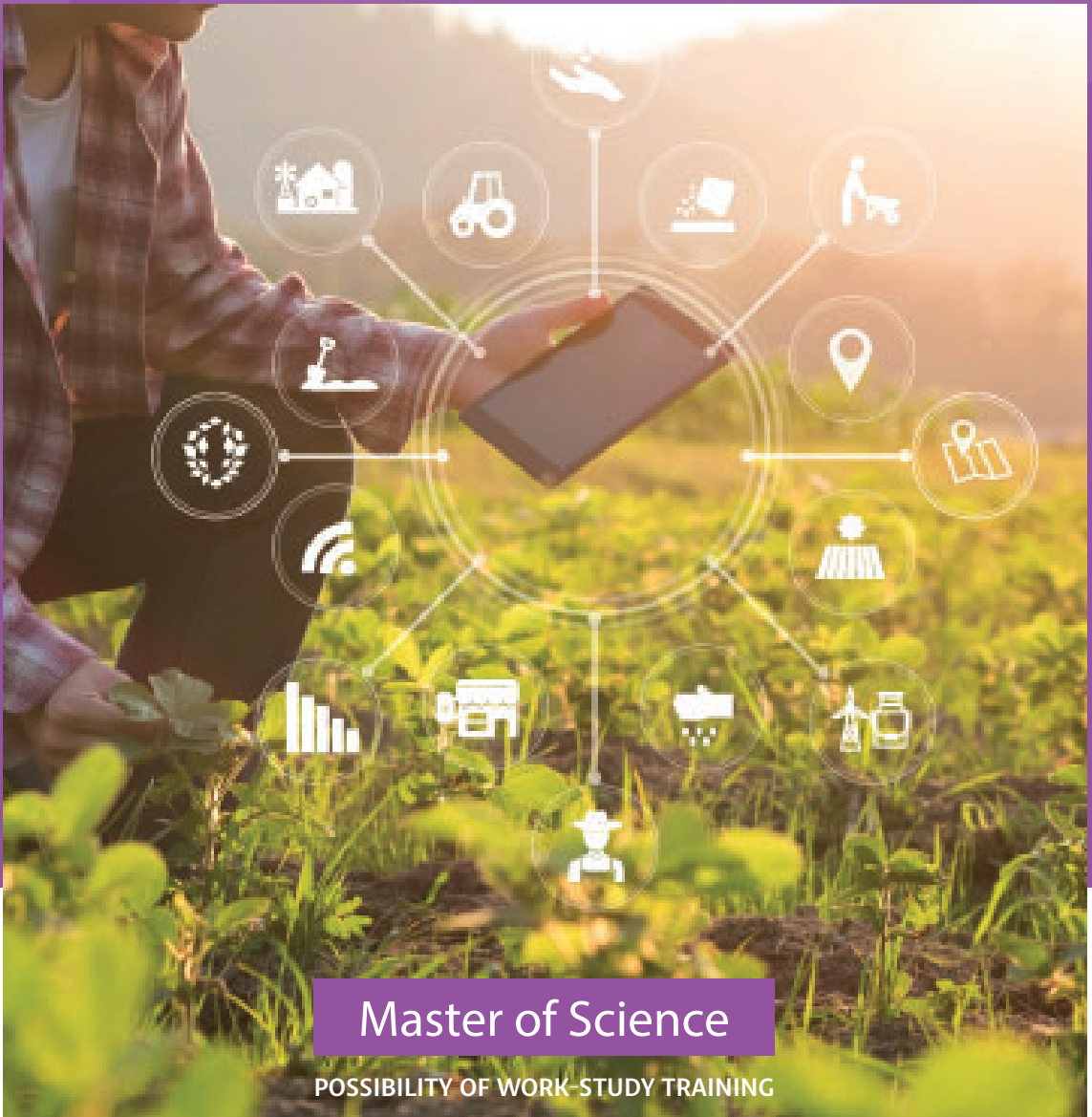


2022-2023

# AGRICULTURAL & FOOD DATA MANAGEMENT



Master of Science

POSSIBILITY OF WORK-STUDY TRAINING

Data are revolutionizing companies in terms of management, research & development, and marketing. Digital technologies are constantly evolving and bring out new approaches to agriculture, which require new skills. The objective of the Master of Science in Agricultural & food data management program is to train data scientists to meet the challenges of life sciences, agriculture, and food industry.

## CONTEXT

The focus is on acquiring and applying IT and data mining techniques in the field of research and in companies and organizations involved in creating intelligence for agriculture.

The program offers solid, future oriented training, drawing on a multidisciplinary teaching approach. Its other strengths are the extensive experience of the program staff in monitoring internships, as well as the partnerships with many companies and educational and research institutions.

Our program enjoys the support of several academic and industry partners, including ACTA, Agro EDI Europe, NatUp, the Institute of Soil Science and Plant Cultivation (IUNG) in Pulawy (Poland), the Normandy Regional Chamber of Agriculture, Coop de France, Be API, ISAGRI, MiXscience (Avril Group), Proagric, Sodiaal.



Salima TAIBI  
Accreditation to  
Supervise Research  
(HDR), PhD  
Professor in statistics  
Deputy Head of the MSc  
Agricultural & food data  
management



Jérôme DANTAN  
PhD, Eng.  
Associate professor  
in computer science  
Head of the MSc.  
Agricultural & food data  
management



## KEY POINTS

- 01 Expertise in data management applied to life sciences and precision agriculture
- 02 International classes with 2/3rds of students coming from all over the world
- 03 - 6-month insertion rate of 100%
- 04 Possibility of work-study training (with a 12-month graduation)
- 05 UniLaSalle, a higher education centre of national and international reference in the earth, life, environmental, energy and digital sciences



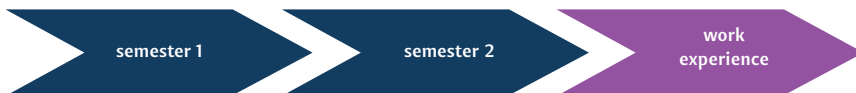
## MSc Agricultural & food data management

# COURSE STRUCTURE

The MSc is taught in English and lasts 12 months.  
It can also be proposed as a semester of study abroad

**First academic period :** from September 15<sup>th</sup>, 2022, to January 27<sup>th</sup>, 2023

**Second academic period :** from January 30<sup>th</sup> to April 7<sup>th</sup>, 2023



<p><b>Agriculture, Food Science and Big data</b> An overview of AgTech and Food Science Sociology and digital transformation</p>	<p><b>Connected ag. &amp; food</b> Precision Agriculture GIS Software, image processing</p>
<p><b>Marketing &amp; business analytics</b> Data marketing Business strategy &amp; datavisualization</p>	<p><b>Big data, IoT and data property rights</b> Massive data processing and IoT IT security &amp; data property rights</p>
<p><b>IT Data management</b> Excel spreadsheets Databases and SQL Project management</p>	<p><b>Machine Learning Methods</b> Machine learning and deep learning Modeling</p>
<p><b>Data Analysis applied to Food Science</b> Data Analysis Data Mining</p>	<p><b>Data Project for Agriculture &amp; Food Science</b> Practical project whose subject is offered by either the teaching staff or a partner company, e.g. building a decision-making tool for smart agriculture, developing of innovative IT software</p>
<p><b>Software Engineering</b> Excel programming, VBA Advanced programming in Python</p>	
<p><b>Survey Methods</b> Unstructured Data, Multiple Correspondence Analysis Survey Consumers data Analysis, text mining &amp; Natural Language Processing</p>	<p><b>Cross fields</b> Agorajob/Professional CV French foreign language</p>

## Career

The program provides students with skills for which there is significant demand in the following sectors: agriculture, food industry, e-commerce, consulting, retail, e-communication, IT, management, marketing and digital marketing, R&D and healthcare, with a 6-month insertion rate of 100% and salary prospects of over €38,000 per annum:

- Data scientist
- Chief data officer
- Master data manager
- Epidemiologist
- Data designer
- Research leader in agronomy
- Manager of animal health observatories
- Data/business analyst

## Skills

Expertise in data management, IT, statistical, data mining, machine learning, image analysis techniques applied to life sciences and precision agriculture, project management, business analysis, marketing, sociology...

## Work experience

- A four-month placement under an internship agreement or professional training contract in companies such as NatUp, SODIAAL, Promize (ISAGRI), and Evolution XY, Agril Maïsadour
- data project for agriculture and food science :  
A four-week assignments set supervised by companies and professors

## Credits

- 60 ECTS credits
- 40 ECTS credits for the academic period
- 20 ECTS credits for the internship and professional thesis



# TESTIMONIALS



## Admission

- General engineering degree
- Master's degree or equivalent
- Exceptionally, students with a Bachelor's degree or equivalent with professional experience
- Admission will be based on your application and an interview

Online application :

[www.unilasalle.fr](http://www.unilasalle.fr)

[www.international.unilasalle.fr](http://www.international.unilasalle.fr)



## Start of term

September 15<sup>th</sup> 2022



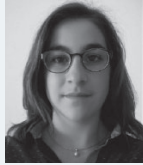
## Tuition and fees

12-mth conventional program:  
€8,700

12-mth Continuing education  
and alternation: €12,500

## Living expenses 2021-2022

- Catering in canteen: €3.25/meal
- Insurance: €200/years
- Campus room: from €270 to €500 /month
- Average cost of living: €650/month



**ESTELLE**, student MSc 2018-2019

«I chose the MSc in Agricultural & Food Data Management to gain new skills and because this program covers the arrival of digital technologies and data processing in the agricultural sector. I've learned such a lot, including programming and statistics, and I particularly enjoy mixing with the international students. There was soon a great atmosphere and team spirit in our group. I'm an intern at Evolution, an animal genetics company based near Rennes. It is very rewarding and offers a different perspective on the skills developed in class. It has given me valuable practical experience!»



**MICKAËL NABAT**, Head of Big Data Development PROAGRICA

«Making effective use of agricultural data is vitally important if we are to meet the societal challenges of this century. It is a key part of the strategies developed by companies in the industry. People with skills in management, data science and agronomy are a crucial link in the chain as they can help management teams to lead these new projects and provide support to those in the field. These new profiles need solid training that encompasses all these criteria.»

## CHOOSE FRANCE

Discover the french "way of life" and gastronomy. Learn French, the world's most commonly spoken language by 2050

### TRY NORMANDY

Normandy: Top region to visit (Lonely Planet 2018). Experience the vibrant city of Rouen, a safe city on a human scale with 43,000 students and 5,000 international students

### STUDENTS LIFE

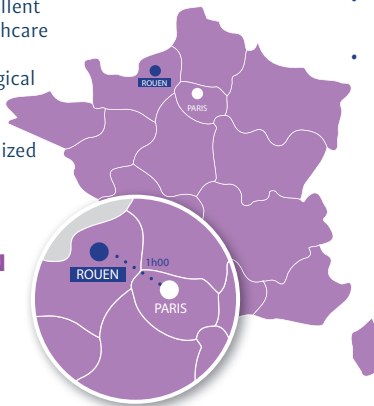
- Social event organized by student and the International Department (Gala, Team building day, touristic stay)
- Several student organizations on the campus (International club)

### HEALTH & WELL-BEING

- Benefit from the excellent and free French healthcare system
- On campus psychological support team
- Disability friendly campus and personalized support
- University hospital within 15'

### ACCOMMODATION

- Secured residences
- University residences
- Private rental accommodations or with families



## OPEN DAYS



Set up a one on one online meeting !

**UniLaSalle**  
Earth & Sciences

INTERNATIONAL  
Anthony Voisine  
Student Recruitment Officer  
+ 33 (0)2 32 82 91 29  
+33 (0)7 61 00 75 44  
[anthony.voisine@unilasalle.fr](mailto:anthony.voisine@unilasalle.fr)

FRANCE  
Céline Jacquemoire  
Admissions Officer  
+ 33 (0)2 32 82 91 47  
[admissions.rouen@unilasalle.fr](mailto:admissions.rouen@unilasalle.fr)

[www.unilasalle.fr](http://www.unilasalle.fr)

UniLaSalle - Rouen campus - 3 rue du Tronquet - CS 40118 - 76130 Mont-Saint-Aignan

